

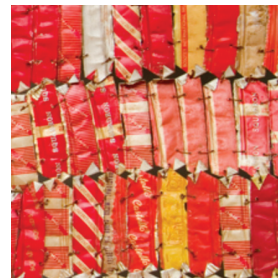
We love board games, and the Museum's artwork seems to like them, too!
Use these clues to find the matching artwork in the galleries



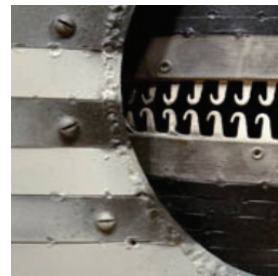
Mouse Trap is all about finding your way out of the maze, and this artwork makes your eyes do the same



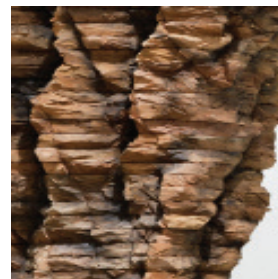
Guess Who? has many individual characters, sort of like how this artwork is made from many individual pieces



Zip, zap, ouch! An operation would be tricky on this artwork that looks like it's about to come alive



Stacking wooden blocks and avoiding the fall! This artwork looks like Jenga but without the tumbling



Checkers may be all about simple black and white, but this artwork takes pattern to the next level

